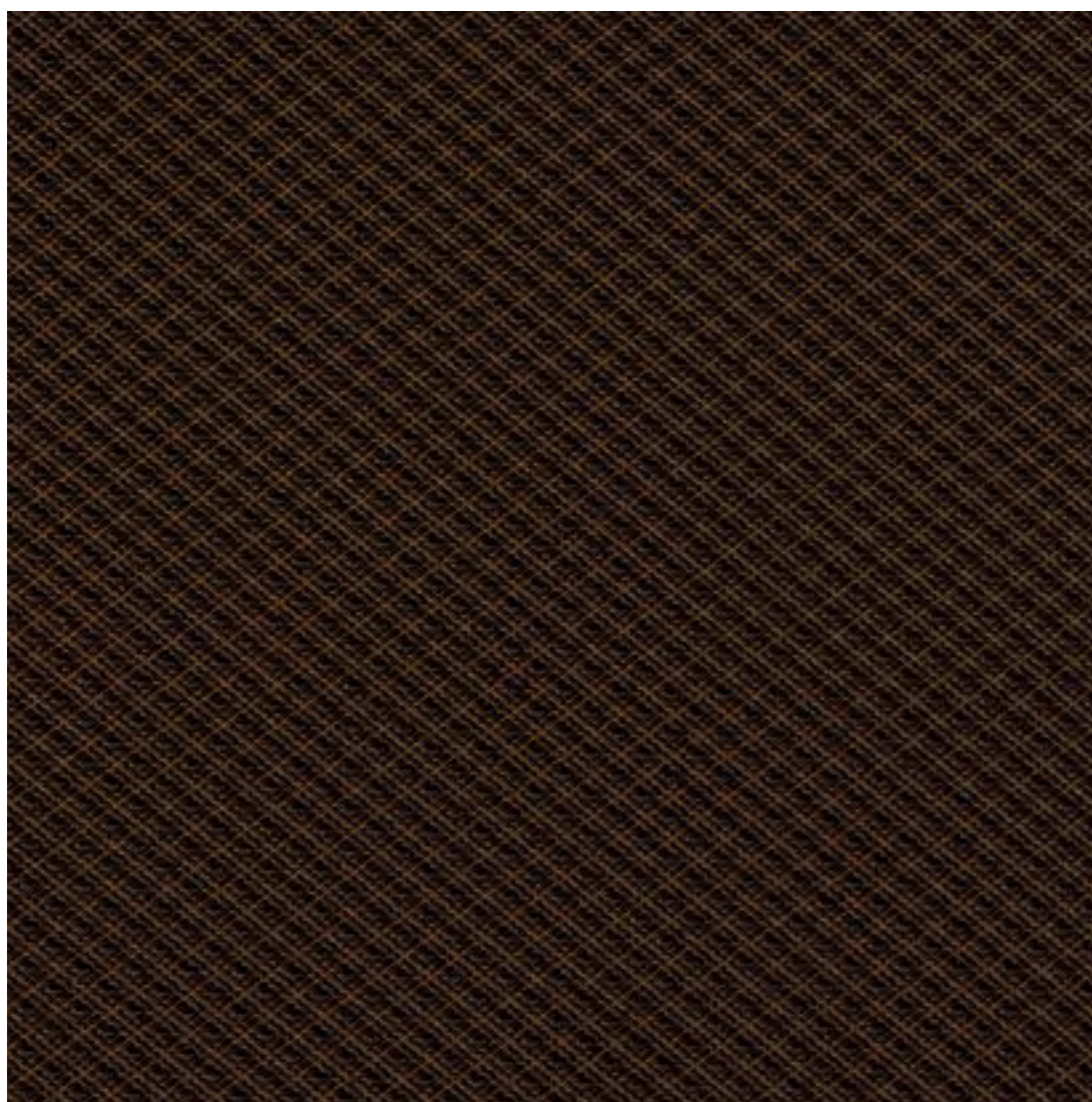










... WITH SPRADLING
it's covered[®]



DIA-6613
ESPRESSO

is a proven vinyl protective coating that is engineered to create a tough, effective barrier against germs, abrasion and stains.

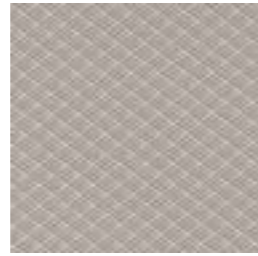
Ultra Hi-Loft²™, a textured high-pile spun-polyester, was developed to enhance the touch and feel for select contract quality coated fabrics, that improves tailorability, and provides a distinctive pleasing appearance on any seating application. Ultra Hi-Loft²™, the next generation of Spradling's popular Hi-Loft™ backing is the featured textile on Spradling's new contract designs – DIAMANTE, HITCH and VOGUE.

-  *Exzellente Abriebfestigkeit / Resistencia a la abrasión / Resistance a l'abrasion / Abrasion resistant / Resistenza all'abrasione / Doskonała odporność na ścieranie*
-  *Wasserabweisend / Impermeabilidad / Imperméabilité / Impermeability / Impermeabilità / Wodoodporny*
-  *Lichtechtheit / Durabilidad del color a la luz / Résistance à la lumière / UV resistant / Resistenza raggi solari / Odporny na promieniowanie UV*
-  *Kältebruchresistent / Resistencia a bajas temperaturas / Résistance aux basses températures / Low temp. resistant / Resistenza alla rottura da freddo / Odporny na niskie temperatury*
-  *Antimikrobiell ausgerüstet / Resistencia a microorganismos / Protection contre des micro-organismes / Mildew resistant / Antimuffa / Odporny na pleśń*
-  *Einfache Reinigung / Fácil limpieza / Facilité d'entretien / Easy to clean / Facile da pulire / Łatwy do czyszczenia*
-  *Flammhemmend ausgerüstet / Retardancia al fuego / Retardement au feu / Flame retardant / Ritardanza al fuoco / Produkt uniepalniony*
-  *Chemikalienbeständig* / Resistencia a químicos* / Résistance aux produits chimiques* / Chemical resistant* / Resistenza chimica* / Odporny na chemikalia**

**Bitte anfragen / Pregunte por asesoría / Sur demande / Upon request / Si prega d'informarsi / na życzenie*



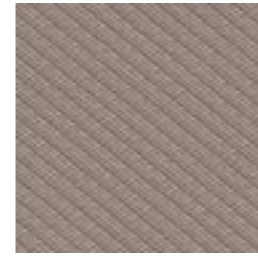
DIA-6600
POLAR **NEW!**



DIA-6601
SNOW



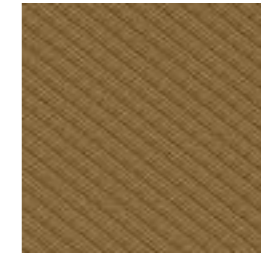
DIA-6602
IVORY



DIA-6620
TAIPOCA **NEW!**



DIA-6603
TAUPE



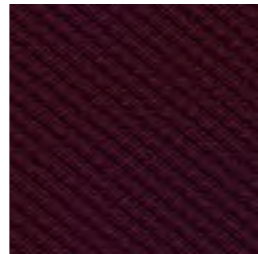
DIA-6604
HONEY



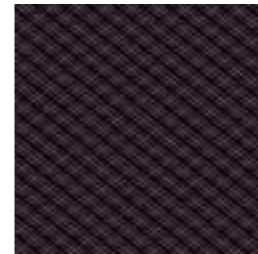
DIA-6607
SUNSET



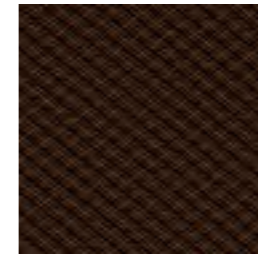
DIA-6609
LAVA



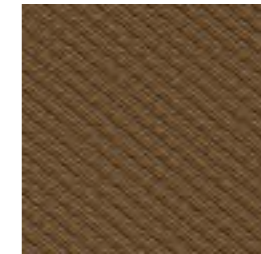
DIA-6610
MULBERRY



DIA-6617
GRAPEY



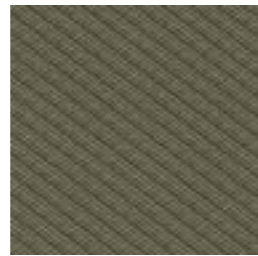
DIA-6613
ESPRESSO



DIA-6619
OTOÑO



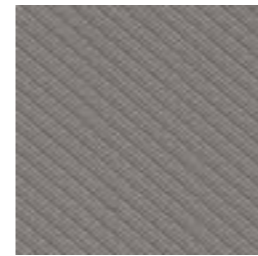
DIA-6616
OLIVE



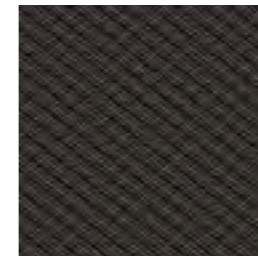
DIA-6605
SAGE



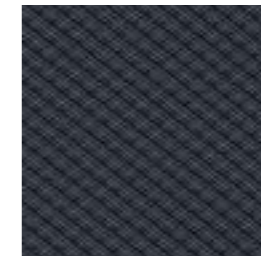
DIA-6622
MERCURY **NEW!**



DIA-6621
TONIC **NEW!**



DIA-6614
METEOR



DIA-6623
VINTAGE **NEW!**

For Care and Cleaning instructions please visit our website

No Master samples (not suitable for colour matching and quality control / testing purposes).

Commercially acceptable colour shifts may occur between production runs. As such lot separation is recommended.

All SPRADLING® products and services are offered and sold subject to the SPRADLING® General Terms and Conditions of Sale, available for download under www.spradling.eu. Please follow our manufacturing and maintenance guidelines, also available under www.spradling.eu. In the event of failure to comply with these guidelines, no liability is assumed by the manufacturer and any warranty claim(s) (if applicable) expire.



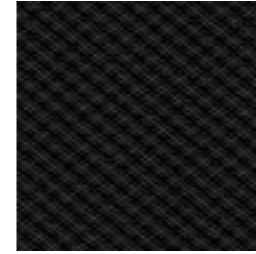
DIA-6611
REGATTA



DIA-6618
INDIGO



DIA-6624
PEPPER **NEW!**



DIA-6615
CARBON



For Care and Cleaning instructions please visit our website



No Master samples (not suitable for colour matching and quality control / testing purposes).

Commercially acceptable colour shifts may occur between production runs. As such lot separation is recommended.

All SPRADLING® products and services are offered and sold subject to the SPRADLING® General Terms and Conditions of Sale, available for download under www.spradling.eu. Please follow our manufacturing and maintenance guidelines, also available under www.spradling.eu. In the event of failure to comply with these guidelines, no liability is assumed by the manufacturer and any warranty claim(s) (if applicable) expire.



CONTRACT



MARINE



AUTOMOTIVE



OUTDOOR

COATED FABRICS