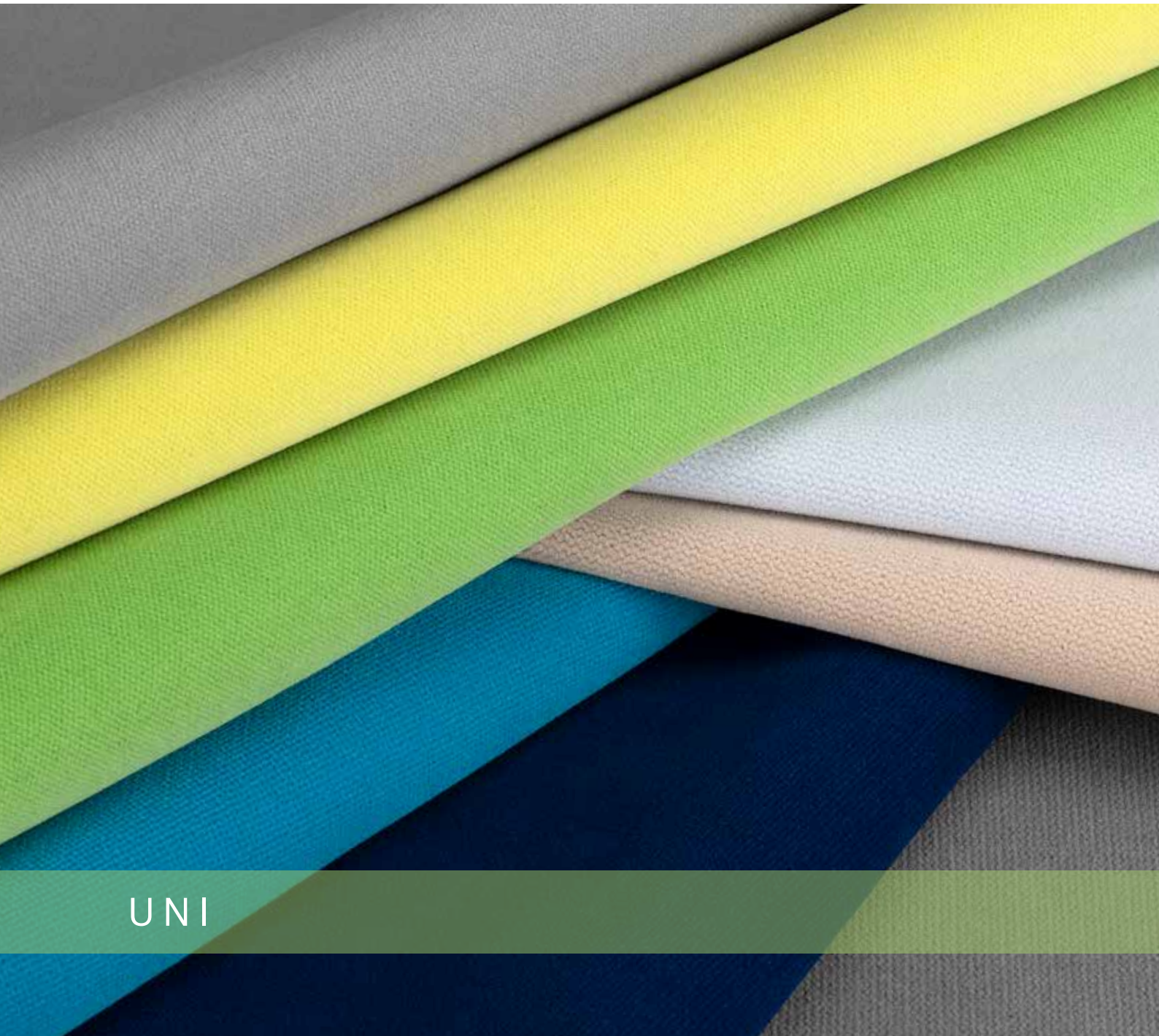


Schoepf
Shaping the Future of Fabrics



UNI

VALERIO

3156905 - ...



310



316



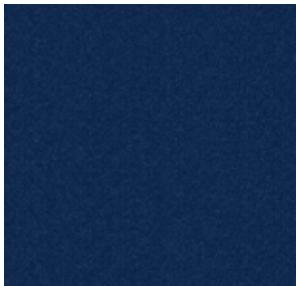
342



560



581



832



867



890



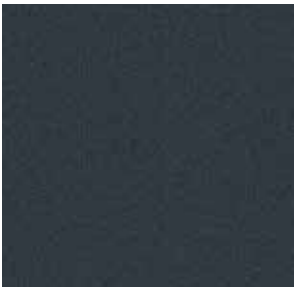
980



999



1004



1005



1011



1012



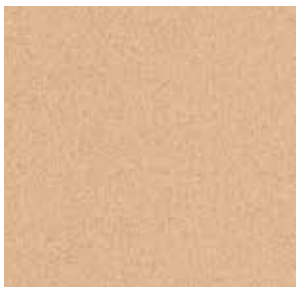
1018



1034



1035



1036



1037



1038

VALERIO

3156905 - ...



1039



1040



1044



4150



5130



7000



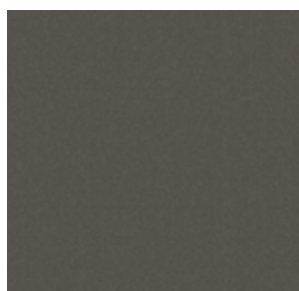
8960



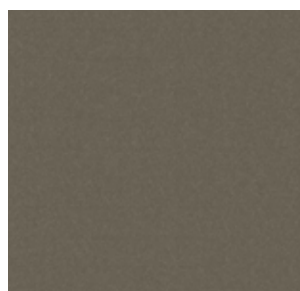
9930

VICTORIA

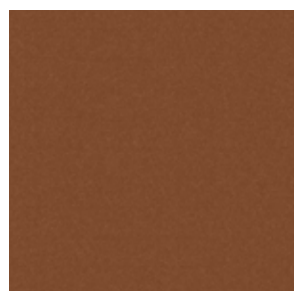
3156105 - ...



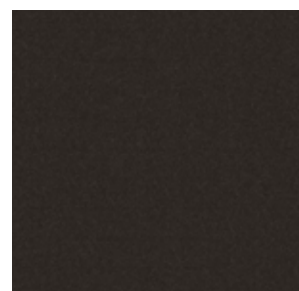
103



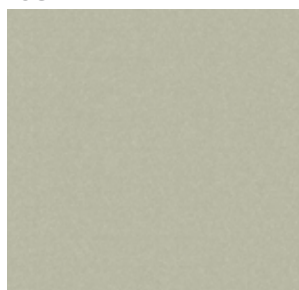
109



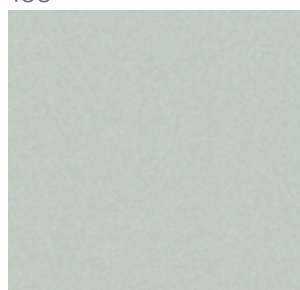
177



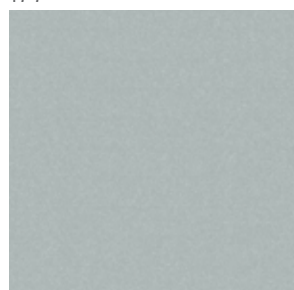
199



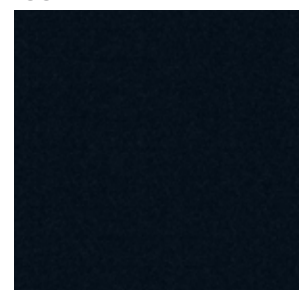
209



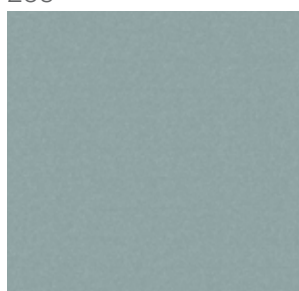
301



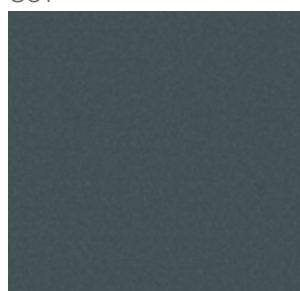
305



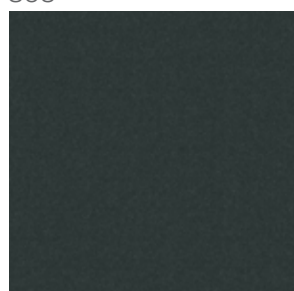
310



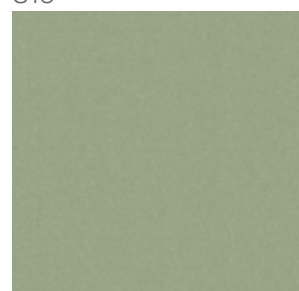
334



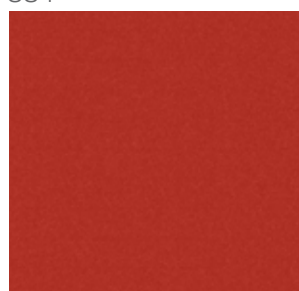
339



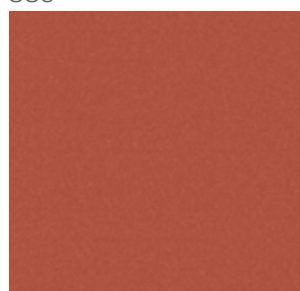
344



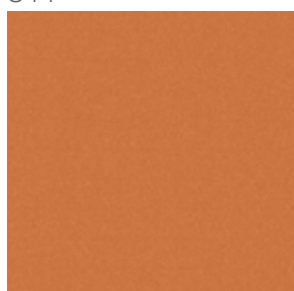
372



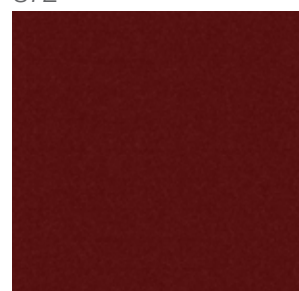
400



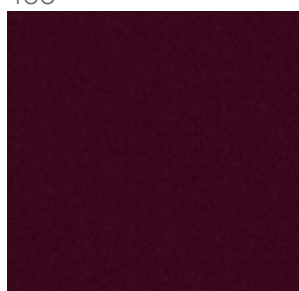
401



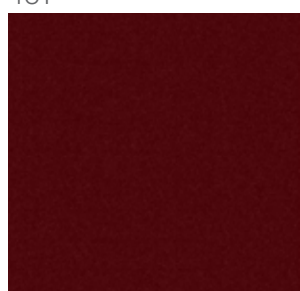
405



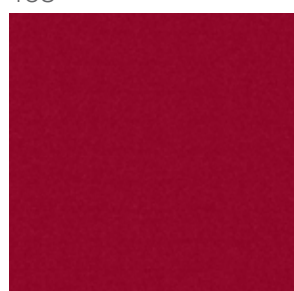
440



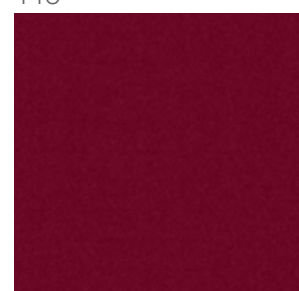
446



505



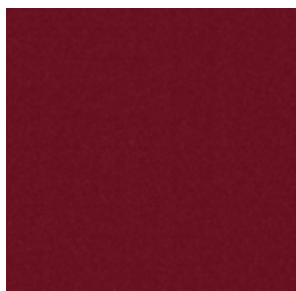
513



547

VICTORIA

3156105 - ...



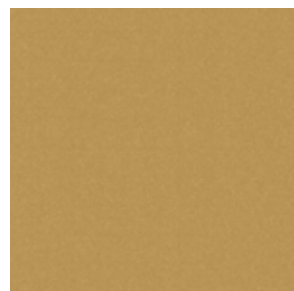
567



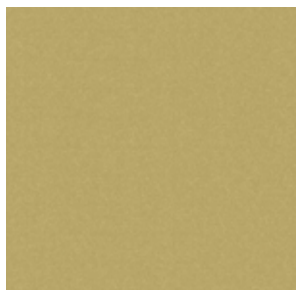
585



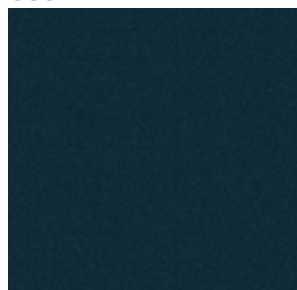
700



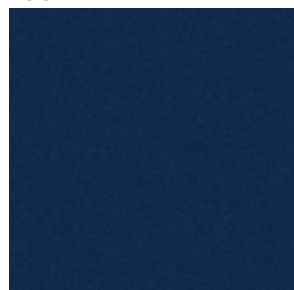
770



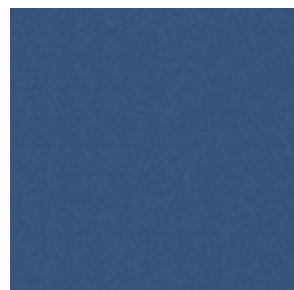
780



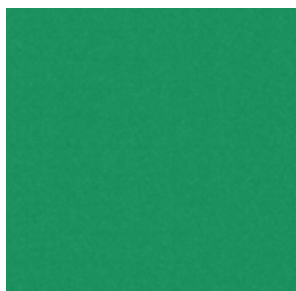
800



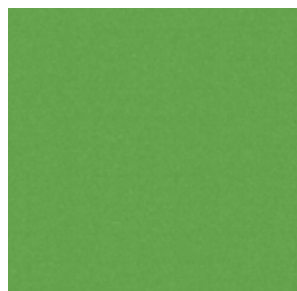
881



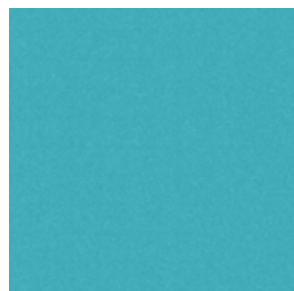
896



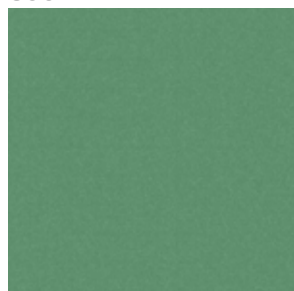
902



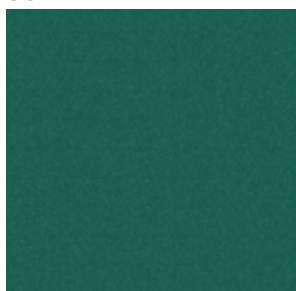
906



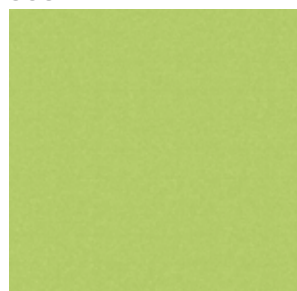
907



964



993



995

DAGNY

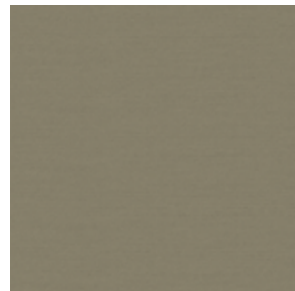
3156802 - ...



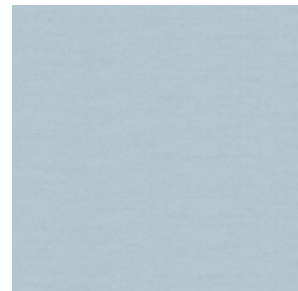
202



211



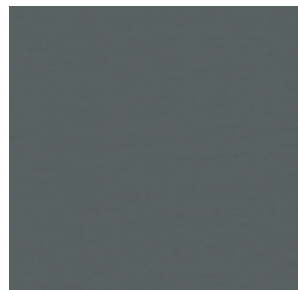
256



303



304



306



Uni Stoffe lassen sich ausgezeichnet verarbeiten und haben während ihrer Entwicklung alle Belastungstests unseres Hauses durchlaufen. Das Ergebnis sind Stoffe mit außerordentlicher Strapazierfähigkeit, hoher Lebensdauer und sehr guten Pflege- und Reinigungseigenschaften. Typisch Schoepf eben.

Technische Daten:

Valerio A / Victoria A / Dagny A

Material/Nutzschicht: Polyester

Breite: Valerio 153 cm / Victoria 153 cm / Dagny 140 cm

Scheuertouren

(DIN EN ISO 12947-2):

mind. 70.000 Touren

Heißlichtechtheit (DIN EN ISO 105-B06):

Note 6-7 (theor. Höchstwert = 8)

Brandprüfung gemäß der neuen

ECE Regelung Nr. 118:03.

Haben Sie Fragen zur neuen ECE Regelung Nr. 118:03? Wir helfen gerne weiter.

Auf Wunsch auch mit unserer **Anti-Schmutz-Ausrüstung (ASA)** lieferbar.

Optional mit der permanenten bakterien- und virusabweisenden Beschichtung **„Schoepf Protect Pro“** erhältlich.

Sollten Sie Ihre Wunschfarbe in unseren Kollektionen nicht finden, so wird unsere haus-eigene Färberei diese gerne für Sie umsetzen.

Mögliche Farbabweichungen in den Abbildungen sind drucktechnisch bedingt. Bitte fordern Sie bei Bedarf Original-Stoffmuster an.

Uni fabrics are easily to work with and have undergone all in-house quality tests during their development. This has resulted in fabrics with extraordinary durability, a long lifespan and excellent care and cleaning properties. Just typical of Schoepf.

Technical information:

Valerio A / Victoria A / Dagny A

Material/Pile: Polyester

Width: Valerio 153 cm / Victoria 153 cm / Dagny 140 cm

Abrasion resistance

(DIN EN ISO 12947-2):

min. 70.000 rubs

Light-fastness (DIN EN ISO 105-B06):

value 6-7 (theor. highest value = 8)

Flammability test according to the

new ECE regulation No. 118:03.

Do you have any questions about the new ECE regulation No. 118:03? If you have any further questions please do not hesitate to contact us.

Upon request with special **Anti-Soil treatment (ASA)**.

Optional with **„Schoepf Protect Pro“** permanent bacteria- and virus- repellent coating available.

In case you are unable to find your desired colour in our collection, then we will create it for you in our own dye house.

Due to the printing process colours might differ slightly. On request we gladly will supply fabric samples.

Les **tissus unis** se travaillent remarquablement bien et ont passé tous les tests de résistance internes durant leur développement. Le résultat, ce sont des tissus qui séduisent par une extrême résistance à l'usure, une longue durabilité et des propriétés d'entretien et de nettoyage excellentes. Typiquement Schoepf évidemment.

Données techniques:

Valerio A / Victoria A / Dagny A

Matériau/poil: polyester

Largeur: Valerio 153 cm / Victoria 153 cm / Dagny 140 cm

Résistance à l'abrasion

(DIN EN ISO 12947-2):

au moins 70.000 tours

Résistance à l'exposition intensive à la lumière

(DIN EN ISO 105-B06):

noté 6-7 (valeur maximale théorique = 8)

L'épreuve du feu selon le nouveau règlement ECE n° 118:03.

Avez-vous des questions concernant le nouveau règlement ECE n° 118:03? Nous serons heureux de vous aider.

Sur demande, nos tissus vous sont livrés avec protection **antitaches ASA**.

Disponible en option avec revêtement antibactérien permanent et anti-virus **'Schoepf Protect Pro'**.

Si vous ne trouvez pas votre couleur de choix dans notre collection, notre teinturerie interne la réalisera pour vous.

Pour des raisons d'impression, les couleurs dans les illustrations peuvent diverger légèrement du ton original. Demandez nous un échantillon de tissu original en cas de besoin.

E. Schoepf GmbH
Rathausstraße 18 · DE-95236 Stambach
Tel.: +49 (0) 92 56 80 0 · Fax: +49 (0) 92 56 80 72
info@e-schoepf.de · www.e-schoepf.de